



Hug Me Boucle Shawl

Yarn: Handpainted Silk Mohair Boucle from The Yarn Tree, 1 skein (390 yds)

Finished Size: As large as you want it

Gauge: 3 sts per inch in Garter

Needle Size: US 11 mm

All of us have boucle yarn in our stash that we have NO idea what to do with. Here's your perfect chance to use it up!! Feel free to use whatever colors you want; variegated would work very well, too!

Abbreviations

inc – increase

k – knit

k2tog – knit 2 stitches together

kwise – knitwise

m – marker

m1 – make 1 stitch by picking up the bar in between two stitches and knitting it through the back

p – purl

p2sso – pass 2 slipped stitches over

pm – place marker

rep – repeat

sl – slip

st st – stockinette stitch

sts – stitches

tog – together

PATTERN

Body (Use Chart 1 as reference):

Cast on 6 stitches.

Increase Section:

Row 1: sl1, knit across to last 2 sts, yo, k1, p1.

Row 2 (and all even rows): sl1, knit to last st, p1.

Repeat Rows 1 & 2 until a total of 10 rows completed.

Next Row (YO Row): sl1, [(yo, k2tog) to last 2 sts], yo, k1, p1.

Repeat Row 2.

Repeat Rows 1 & 2 for 10 more rows, then repeat YO Row.

Continue in this manner until half of your yarn is used up.

Decrease Section:

Row 1: sl 1, knit across to last 5 sts, k2tog, yo, k2tog, p1.

Row 2 (and all even rows): sl1, knit to last st, p1.

Repeat Rows 1 & 2 until a total of 10 rows completed.

Next Row (YO Row): sl1, [(yo, k2tog) to last 5 sts], k2tog, yo, k2tog, p1.

Repeat Row 2.

Repeat Rows 1 & 2 for 10 more rows, then repeat YO Row.

Continue in this manner until 6 sts are left on your needle ending with Row 2.

Bind off loosely. Weave in all ends.

Optional Tie (Use Chart 2 as reference):

Pick up and knit the 6 cast on stitches.

Increase Section:

Row 1: p1, k1, yo, s, k1, p1.

Row 2 (and all even rows): p1, knit to last st, p1.

Row 3: p1, k1, yo, knit to last 2 sts, yo, k1, p1.

Repeat Rows 2 & 3 until you have a total of 22 sts on your needles.

Decrease Section:

Row 1: p1, ssk, yo, ssk, knit to last 5 sts, k2tog, yo, k2tog, p1.

Row 2 (and all even rows): p1, knit to last st, p1.

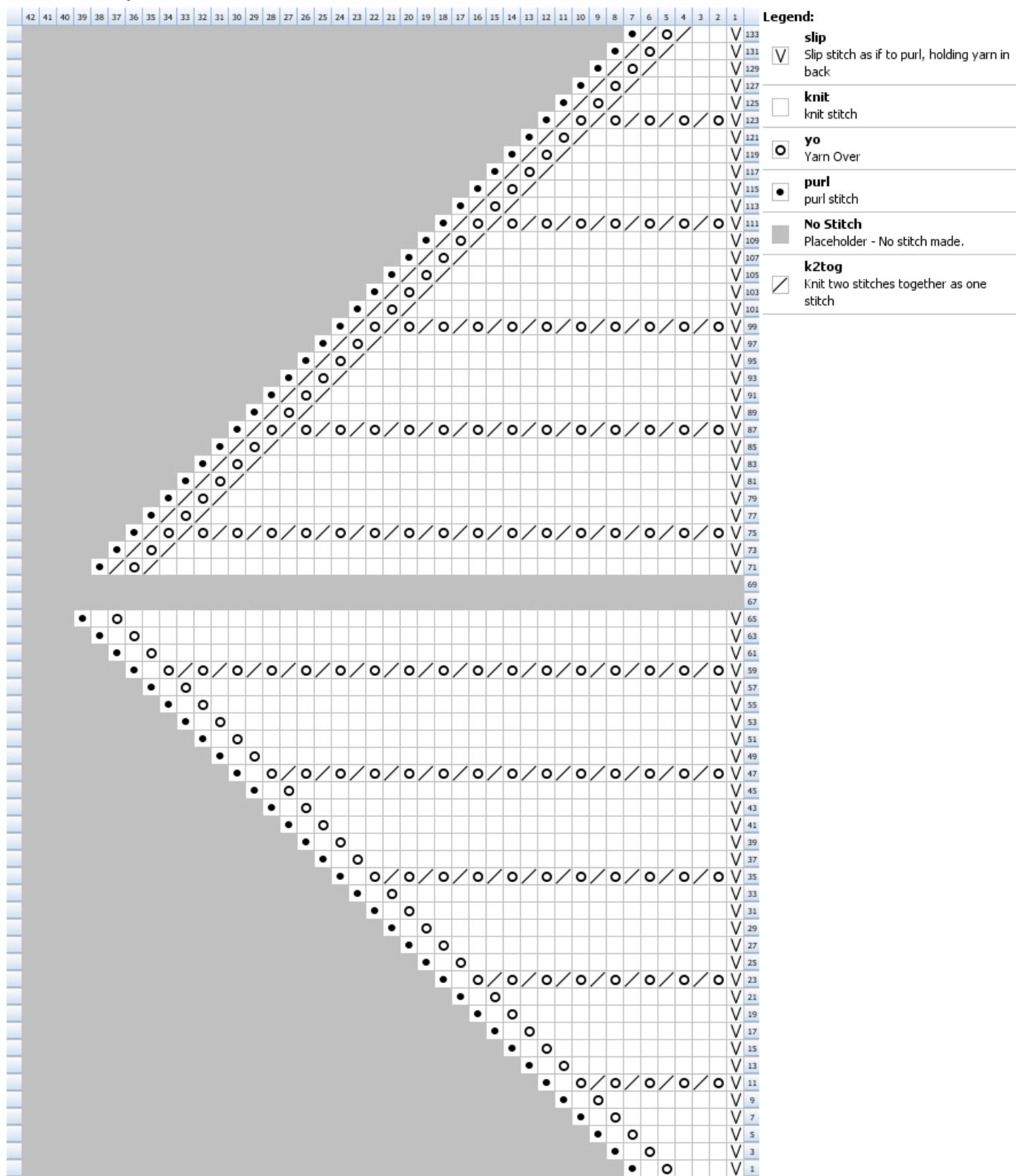
Repeat Rows 1 & 2 until you have a total of 6 sts on your needles.

Bind off loosely. Repeat on other end of shawl.

Weave in all ends.



Chart 1: Body

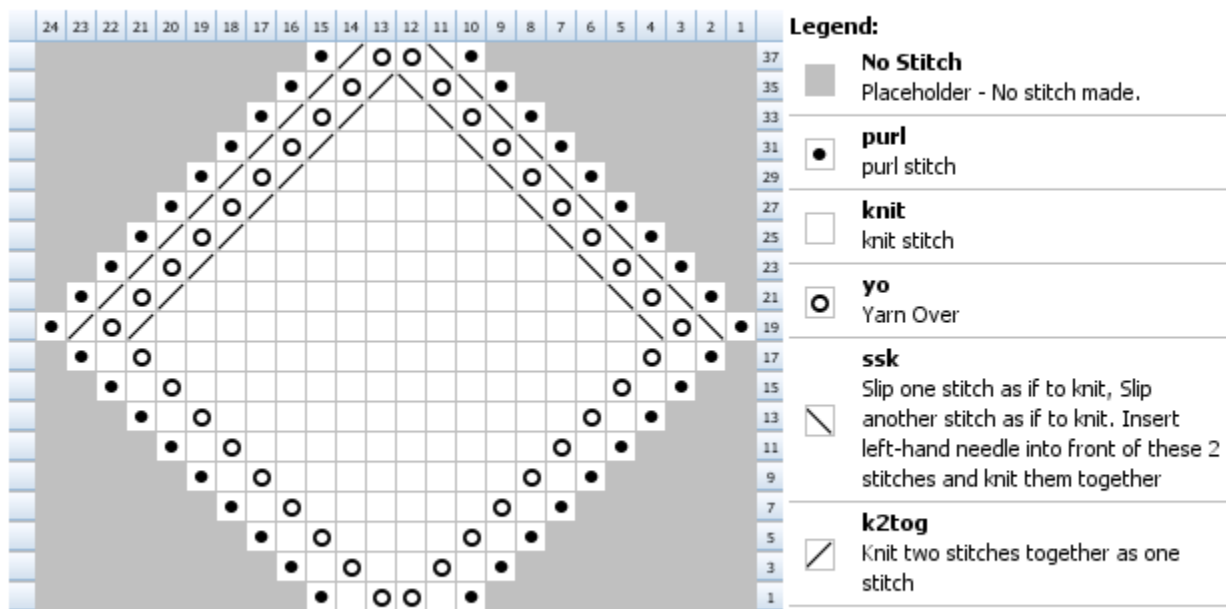


- Legend:**
- ▼ slip
Slip stitch as if to purl, holding yarn in back
 - knit
knit stitch
 - yo
Yarn Over
 - purl
purl stitch
 - No Stitch
Placeholder - No stitch made.
 - / k2tog
Knit two stitches together as one stitch

Created in Knit Visualizer (www.knitfoundry.com)

Copyright © Rosi Garmendia, 2007. All rights reserved.
 For private, non-commercial use only.
www.rosi-g.com/soapyknitter

Chart 2: Optional Ties



Created in Knit Visualizer (www.knitfoundry.com)



Copyright © Rosi Garmendia, 2007. All rights reserved.
 For private, non-commercial use only.
www.rosi-g.com/soapyknitter